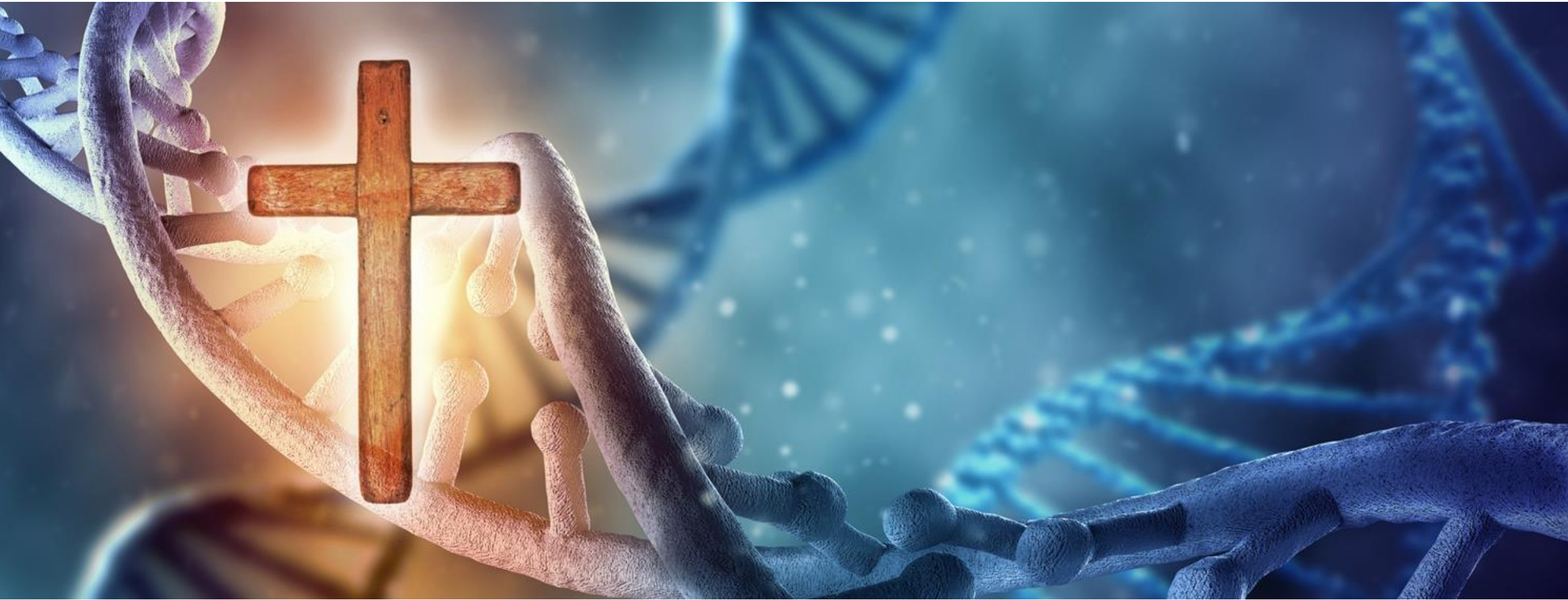


Gospel DNA

Replicating Effective Ministry



EFFECTIVEMINISTRY

Before the throne

Before the throne of God above
I have a strong, a perfect plea
A great high priest whose name is Love
Who ever lives and pleads for me

Before the throne

My name is graven on His hands

My name is written on His heart

I know that while in heaven He stands

No tongue can bid me thence depart

No tongue can bid me thence depart

Before the throne

When Satan tempts me to despair
And tells me of the guilt within
Upward I look and see Him there
Who made an end to all my sin

Before the throne

Because the sinless Saviour died

My sinful soul is counted free

For God the just is satisfied

To look on Him and pardon me

To look on Him and pardon me

Before the throne

Behold Him there the risen Lamb
My perfect spotless righteousness
The great unchangeable I am
The King of glory and of grace

Before the throne

One with Himself I cannot die
My soul is purchased by His blood
My life is hid with Christ on high
With Christ my Saviour and my God!
With Christ my Saviour and my God!

Before the throne

One with Himself I cannot die
My soul is purchased by His blood
My life is hid with Christ on high
With Christ my Saviour and my God!
With Christ my Saviour and my God!

*Original Words by Charitie Lees Bancroft (1841-1892), Alternate Words and Music by [Vikki Cook](#)
©1997 Sovereign Grace Worship (ASCAP).*

When I survey

When I survey the wondrous cross
On which the Prince of glory died
My richest gain I count but loss
And pour contempt on all my pride

When I survey

Forbid it, Lord, that I should boast

Save in the death of Christ, my God

All the vain things that charm me most

I sacrifice them through his blood

When I survey

See, from his head, his hands, his feet
Sorrow and love flow mingled down
Did e'er such love and sorrow meet
Or thorns compose so rich a crown?

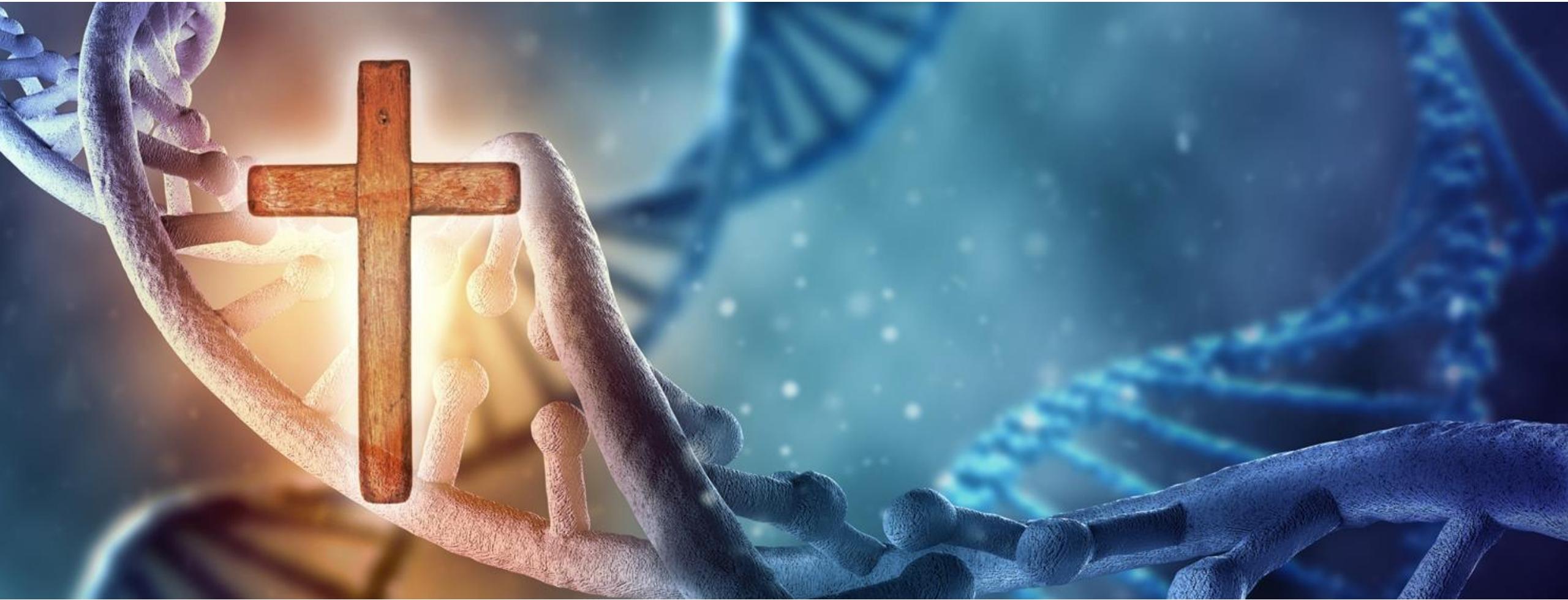
When I survey

Were the whole realm of nature mine
That were an offering far too small
Love so amazing, so divine
Demands my soul, my life, my all
Demands my soul, my life, my all

Words and music: Isaac Watts, Edward Miller Public Domain

Gospel DNA

Replicating Effective Ministry



EFFECTIVEMINISTRY

Welcome

9:10am	Talk 1 - Acts 20:17-38 – Gospel DNA – 1st Century	Richard Coekin
10:00am	Talk 2 - Gospel DNA – London	Richard Coekin
11:00am	Morning Tea	
11:20am	Greg Cooper – Effective Ministry	
11:25am	Talk 3 - Gospel DNA – Sydney	Richard Coekin
12:15pm	Talk 4 - Replicating Effective Ministry through People	Paul Harrington
1:00pm	Lunch	
1:45pm	Workshops	
3:00pm	Afternoon Tea	
3:15pm	Talk 5 - Effective Ministry - Staying focussed on the key ministry	Tim Sims / Sarie King
4:00pm	Close	

Logistics

Time is tight

Morning and Afternoon Tea

Table closest to ballroom – special dietary needs

Water Bottles – refill throughout day

Books on Sale - Karl

Lunch – Level 3 “Bay Garden Restaurant”

2 Food stations

Help yourself to soft drinks

Dietary Requirements

45 min break – 1:45pm

Validation of car parking

Pay at reception (level 1) before you leave for discounted rate

Feedback forms

Questions – Twitter #effmin16quest

Twitter - #effmin16



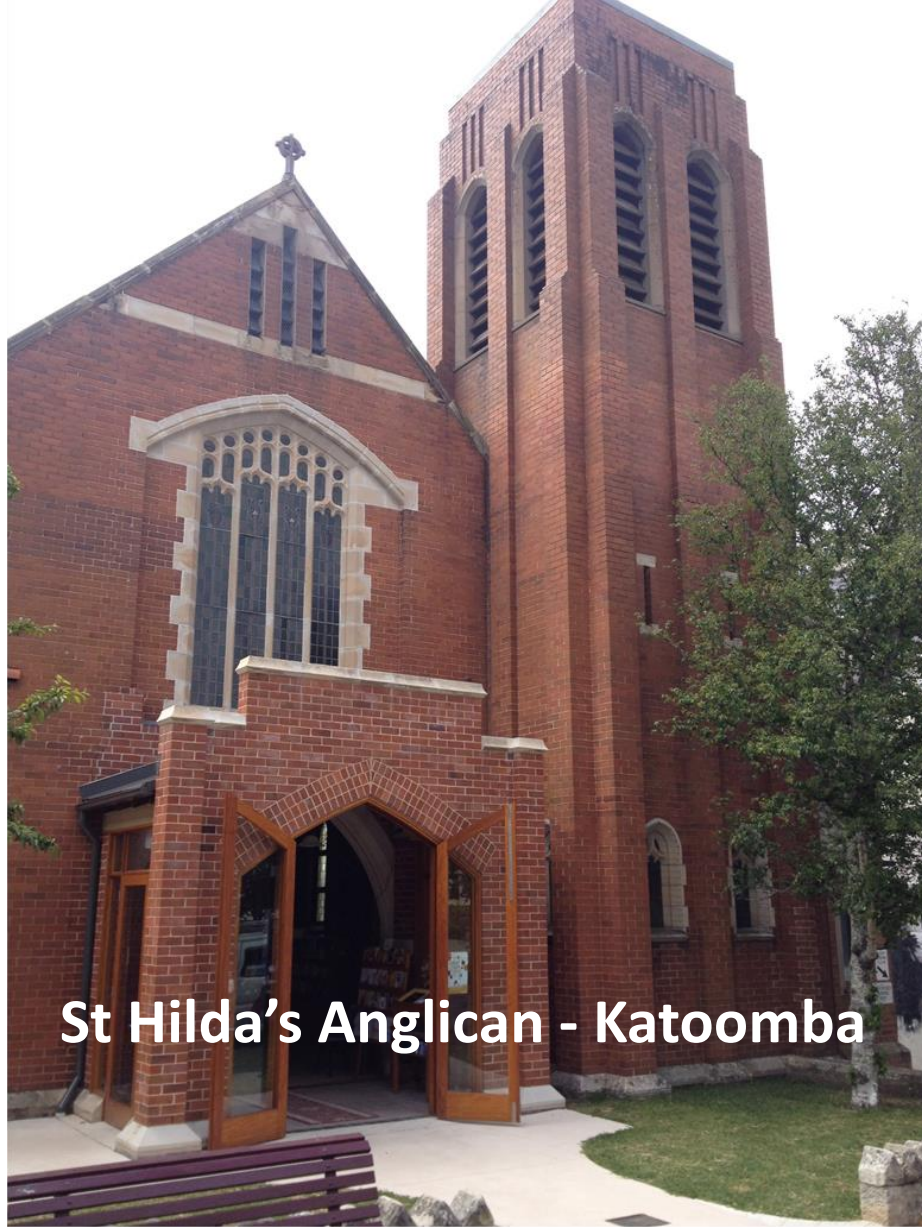
Helene Tyas – CMD
Secretariat

Evacuation Plan

EVACUATION ASSEMBLY POINT

Please note the location of the Assembly Point (STAR) for the hotel in the event of an evacuation been ordered. Park area on the corner of Moate Ave and Princess Street.





St Hilda's Anglican - Katoomba



Cobbitty Anglican Anglican



Moorebank and Hammondville Anglican Churches



All Saints Anglican Church Nowra



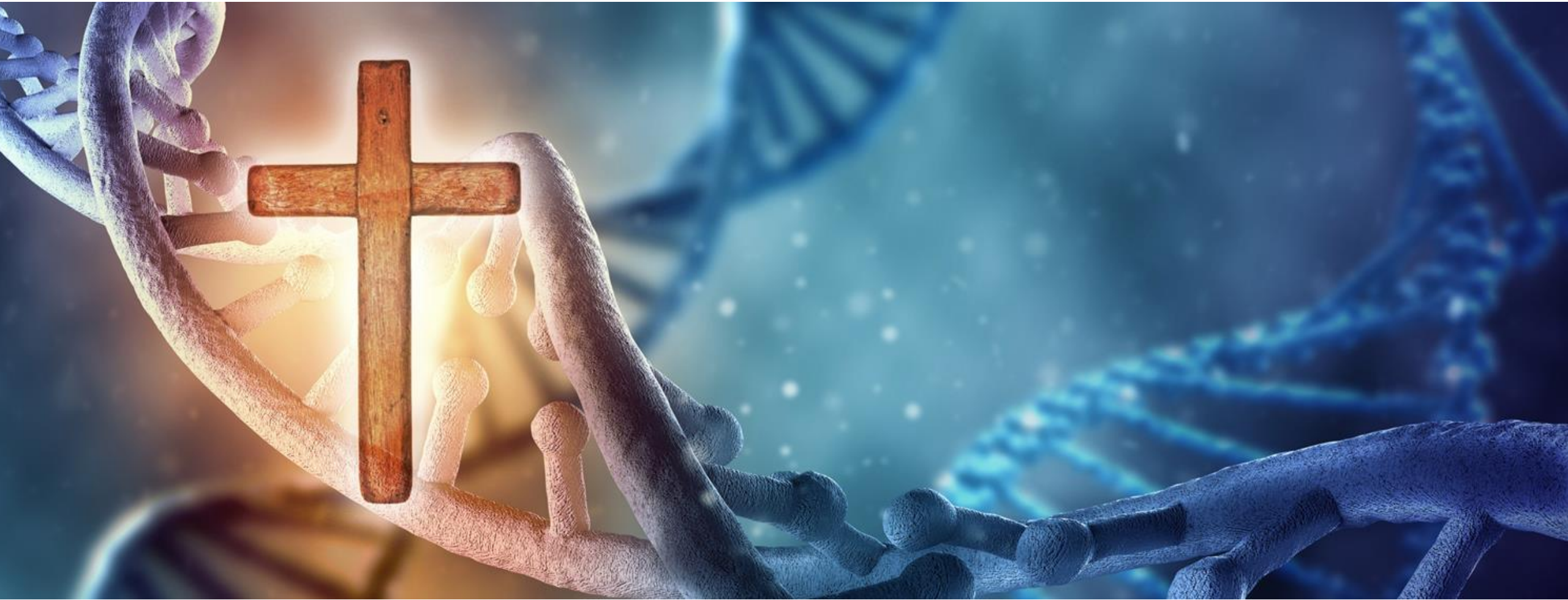
St Luke's Anglican Church
Sth Wagga Wagga



St Mary's Anglican
Church
Nth Wagga Wagga

Gospel DNA

Replicating Effective Ministry



EFFECTIVEMINISTRY

GOSPEL DNA – 1st Century

// Richard Coekin

GOSPEL DNA – 1st Century

// Richard Coekin

Acts 20: 17-38

GOSPEL DNA

Teach the gospel

GOSPEL DNA

Guard the flock

GOSPEL DNA

Give the Word

GOSPEL DNA

Teach the gospel

Guard the flock

Give the Word

Gospel DNA

Replicating Effective Ministry

Tweet your questions
#effmin16quest

GOSPEL DNA – LONDON

// Richard Coekin

CO-MISSION:



EFFECTIVEMINISTRY

 CENTRE FOR
**Ministry
Development**
A CENTRE OF MOORE THEOLOGICAL COLLEGE

CO-MISSION:



GOSPEL DNA – LONDON

// Richard Coekin

Clarify the Vision

Clarify the Vision – for your church

God has called his churches to be lifeboats,
dedicated to saving lives



Clarify the Vision – for your church

Our 7 Prayerful Ministries of WITNESS



Clarify the Vision – for your church

GOVERNING ELDERS



Richard Coekin



Matt Beeby



Stephen Hatherall



Mark Chambers



Simon Hetherington



John Marland



WORSHIP



MINISTRY LEADER

Michael Morrow

ELDERS

Alwin Swales

- SSB
Sunday Gatherings
- Prayer Meeting
- Work
- Home
- ...
and lots more



INSTRUCT



MINISTRY LEADER

Andrew Nicholls

ELDERS

Adrian Blight
Johnno Johnston
Jamie MacNaughton
Jonathan Seckington

- Growth Groups
- Baptisms
- Knowing God
- Marriage Courses
- Parenting
- Biblical Counselling & Care Teams
- Bookstall & Resources
- ...
and lots more



TRAIN



MINISTRY LEADER

Matt Beeby

ELDERS

Matt Dalton
Julian Plescin
Michael White

- Reliable Men
- Partnership
- PTS
- Apprenticeship Scheme
- Other courses
- ...
and lots more



NETWORK



MINISTRY LEADER

Werner Baumker

REVIVE

CO-MISSION
Co-Mission Events

the antioch
plan

...
and lots more



EVANGELISE



MINISTRY LEADER

Drew Waller

ELDERS

Joe Ashton
Jimmy Bell
Pete Watson

- Christianity Explored
- Beer & Bibles
- Other Enquirer Courses
- Bunnies
- Men Behaving Dearly
- JUBIL JUBIL
- Seniors
- Faith in the iWorld
- ...
and lots more



SERVE



MINISTRY LEADER

Matt Beeby

ELDERS

Mark Horrobin
Julian Plescin

- Welcome Ministries
- connect
- Socets
- Serving Teams
- ...
and lots more



SUPPORT



MINISTRY LEADER

Mark Vernon

ELDERS

Stephen Smith

- Mission Partners
- Short Term Mission
- International Café
- International Bible Studies
- Prayer Support
- ...
and lots more

Clarify the Vision – for your movement



OUR 360 VISION: PLANT AND ESTABLISH 360 REFORMED EVANGELICAL CHURCHES IN LONDON

THE GREAT COMMISSION
A PASSION FOR PLANTING FOR LONDON FOR CHRIST

THE EXECUTIVE driving our ministries	FOCUS	INITIATIVES / TARGETS WE PRAY/ WORK FOR			
		30 churches by 2020?	60 churches by 2025?	360 churches by ?	
LOCATIONS Communities / Venues (RP)	Communities Venues Contacts				
RECRUITMENT Leaders / Teams (JA)	Sources Pathways Relationships				
GROWTH Plans / Models (MB)	Research Advise Plan				
FINANCE Patrons / Congregations (SH)	Financial planning Co-Mission Initiative Fund Patrons				
TRAINING Planters / Pastors (RS)	Antioch / Academy Apprentices Staff				
STEERING GROUP Vision Development (RC / MF / RS)	PASTORATE Shaping our character (MF/AM/PW/JR/MV)	Evangelism/Theology	Conferences	Mentors	Partnership
	RESOURCES TEAM Enabling the ministry (WB)	Governance/Ops	Legal /Finance	Events	Media /PR

360 CHURCHES

A family of related churches multiplying a pioneering Gospel ministry DNA

A network of inter-dependent churches committed to practical co-operation

A movement of reformed evangelical churches for the salvation of many to the glory of God

EFFECTIVE MINISTRY

GOSPEL DNA – LONDON

// Richard Coekin

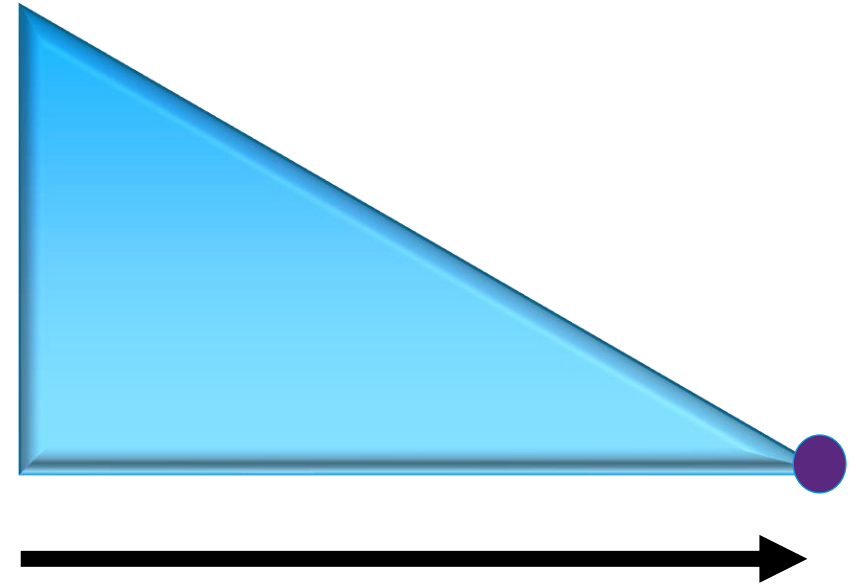
Lead the Vision

Lead the Vision

Don't manage from the middle!

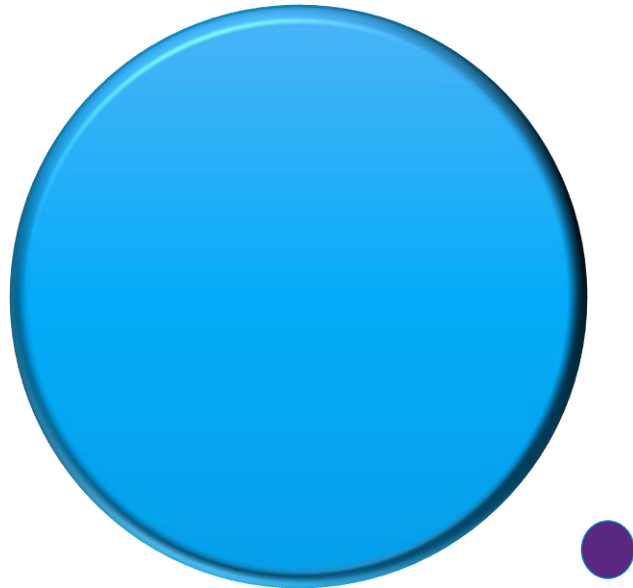


Lead from the front!

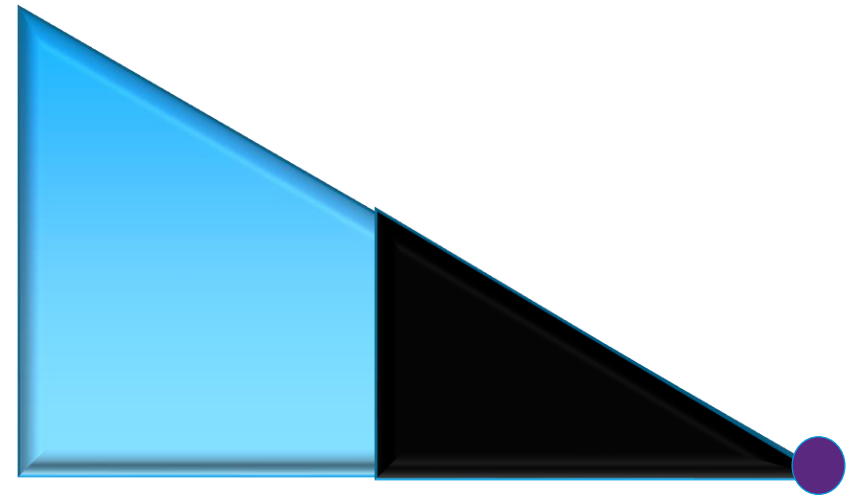


Lead the Vision

Don't lead on your own!

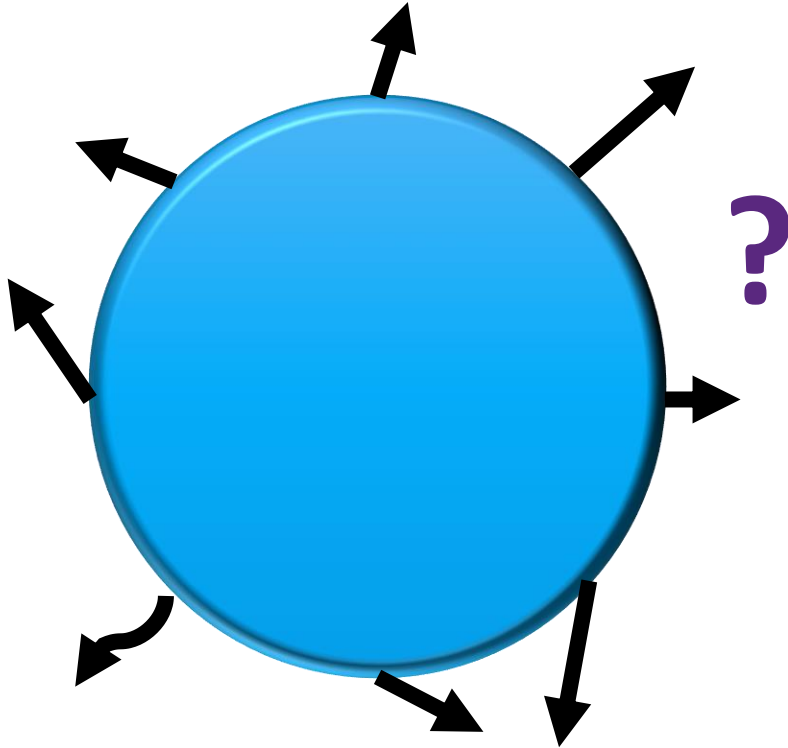


Lead with a team!



Lead the Vision

Don't be paralysed by options!



Do something with certainty!



Lead the Vision

Don't neglect the heart!



Pray and preach the Word!



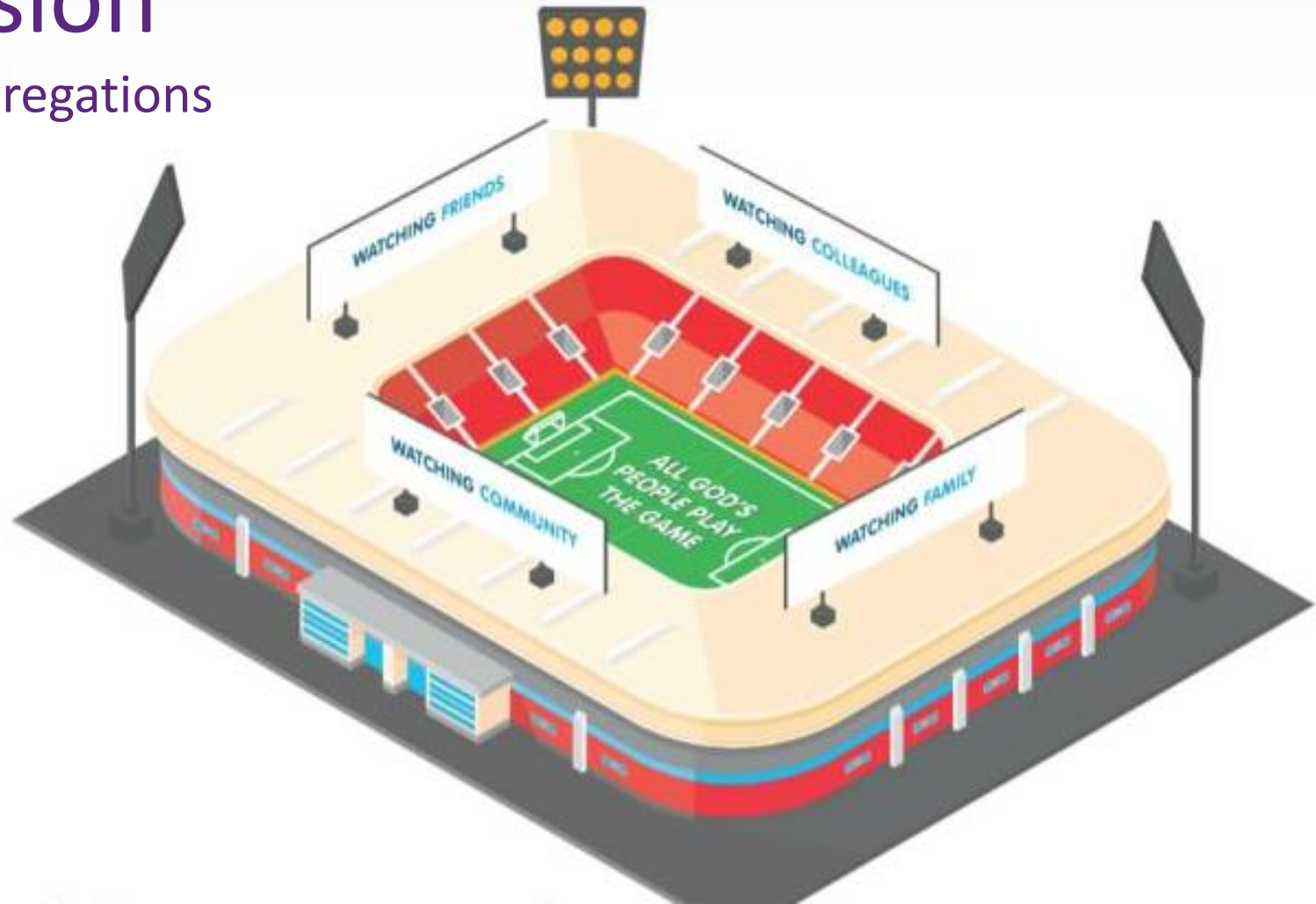
GOSPEL DNA – LONDON

// Richard Coekin

Train the Vision

Train the Vision

Training: for the Congregations



Train the Vision

Training: for Elders and Lay Leaders



Train the Vision

Train Potential:

Pioneers

Pastors

Presbyters

Patrons



Train the Vision

Training: for your movement

Principles of Planting

1. Plant for Christ: for evangelism to grow his church for God's glory alone
2. Prayerful biblical gospel-teaching ministry is essential: for spiritual growth
3. No church-plant is perfect: for God likes to use our weakness
4. Shape the plant for realities not models: internal, transfusion, pioneer, co-operative, colony etc.
5. Plants need leaders, members, money, venue and a plan: in any order
6. Professional staff need high quality loyal elders: to model church membership
7. No. of members needed is mainly an issue of confidence: in the leaders and members
8. Members of other congregations can double up or commit for trial period: for critical mass
9. Plants don't happen by accident: Senior Pastors must drive them
10. Schools, sports centres, churches: good for young families, young couples, yuppies respectively
11. Giving best people & resources is sacrificial generosity: "it's more blessed to give than receive"
12. Churches growing through equipping the congregation for ministry: training is central

GOSPEL DNA – LONDON

// Richard Coekin

Finance the Vision

Finance the Vision

Preach the Gospel



Finance the Vision

Different Kinds of Money

1. Regular giving
2. Project Finance
3. Heritage Investment
4. Patrons Funding

Finance the Vision

“Small plans do not influence the hearts of men” (Napoleon)

GOSPEL DNA – LONDON

// Richard Coekin

Clarify the Vision

Lead the Vision

Train the Vision

Finance the Vision

Gospel DNA

Replicating Effective Ministry

Tweet your questions
#effmin16quest



The Centre for Ministry Development



Archie Poulos
Director



Bishop Peter Hayward
Co-Director



Peter Mayrick
Co-Director



Helene Tyas
Registrar



Kirsty Bucknell
Organisational
Psychologist



Mark Leach
Consultant



CENTRE FOR
**Ministry
Development**

A CENTRE OF MOORE THEOLOGICAL COLLEGE

Peter Cheel

Consultant



Senior Human Resources Director
African Enterprise
Executive Coaching

Recruitment

6th Sept 2016

9:30am-12pm

www.CMD.training

limit 20 people

Gospel DNA

Replicating Effective Ministry

Morning Tea

Tweet your questions
#effmin16quest

Music re-enter