

Gospel DNA

Replicating Effective Ministry

Afternoon Tea
Back at 3:15pm



Gospel DNA

Replicating Effective Ministry



EFFECTIVEMINISTRY

Effective Ministry

Staying Focussed on The Key Ministry

Tim Sims / Sarie King

Wednesday 20 July 2016

3:15 – 3:50pm

Novotel, Brighton Beach

Effective Change

Seven Ingredients

1. Assemble The Resources
2. Define The Purpose
3. Understand The Challenge
4. Outline An Effective Response
5. Confront The Data
6. Detail The Tasks ...

Engage With God

1. Assemble The Resources

People / Data

Sarie King

- Moore College Graduate
- Teacher / Education Leader
- Women's Ministry Leader / Trainer
- Synod / Committees / Task Forces
- Conference Speaking / Research

Tim Sims

- Committed Christian
- Performance Analysis
- CEO Advisor
- Company Ownership / Leadership
- Partnership Management

Theology + Data + Research

- Church Leaders ~500
- Books & Papers >500
- NCLS Data >50,000
- Man Years >25*

* Including CMD

2. Define The Purpose

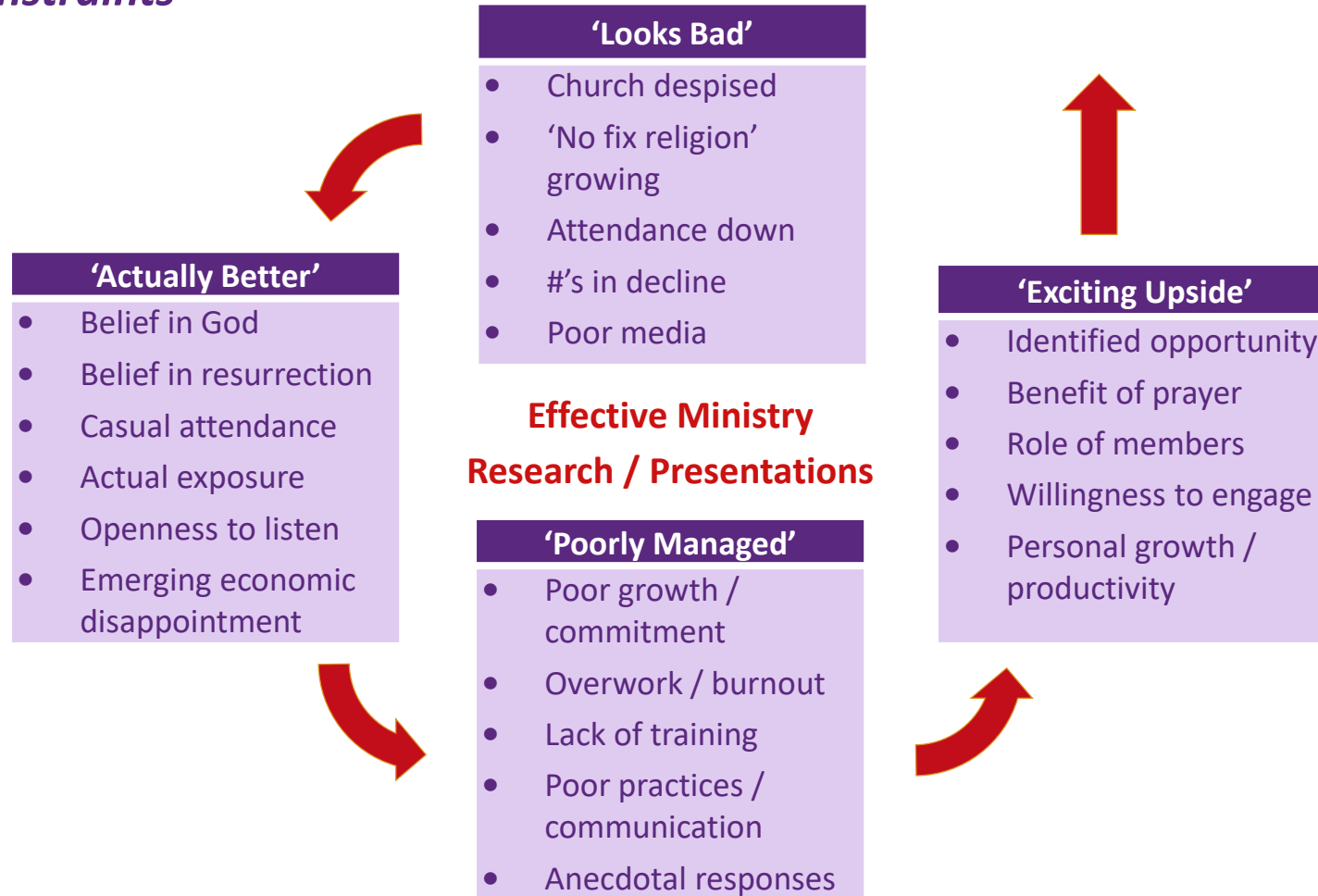
Objective / Outcome

'Disciple Making Disciples' Matt 28:19-20



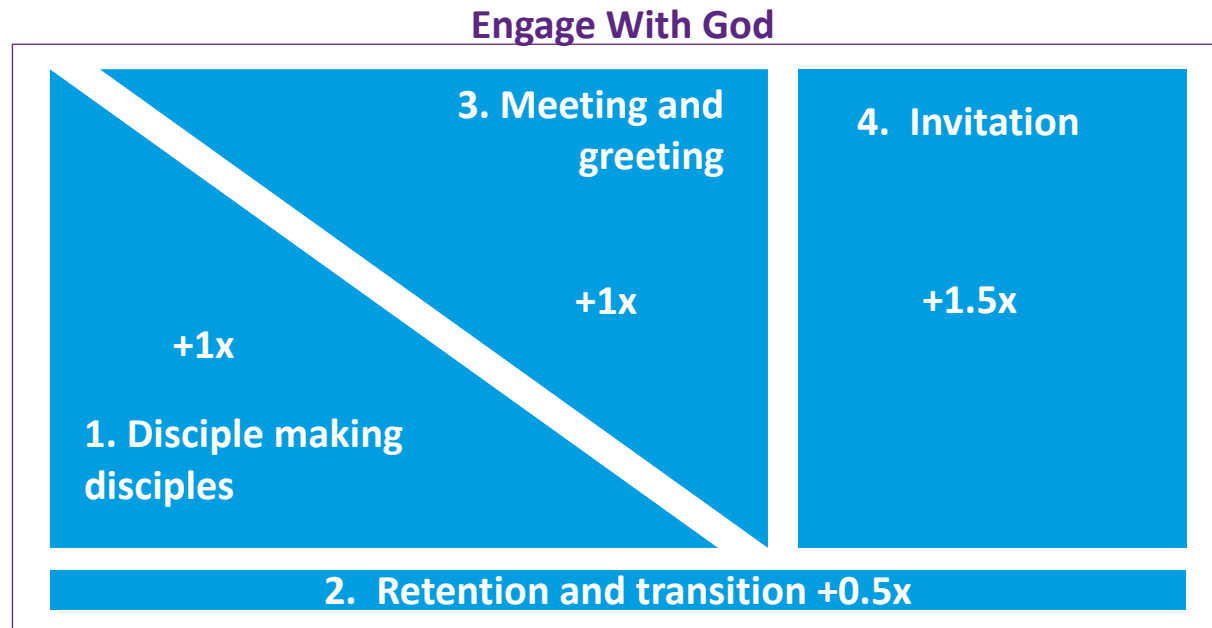
3. Understand The Challenge

Opportunities & Constraints



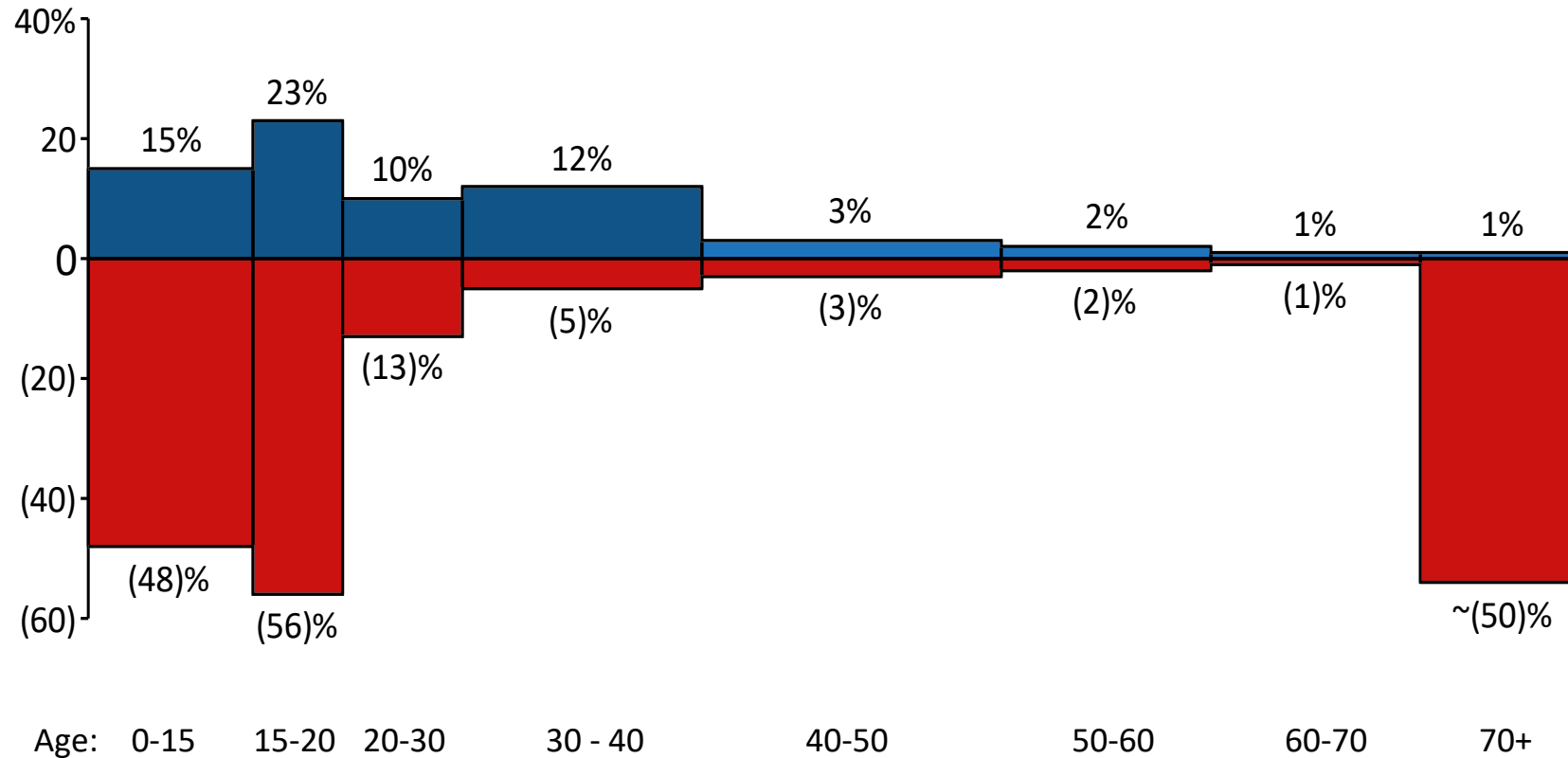
4. Outline An Effective Response

Points Of Leverage



5. Confront The Data

Case Example: Youth Loss



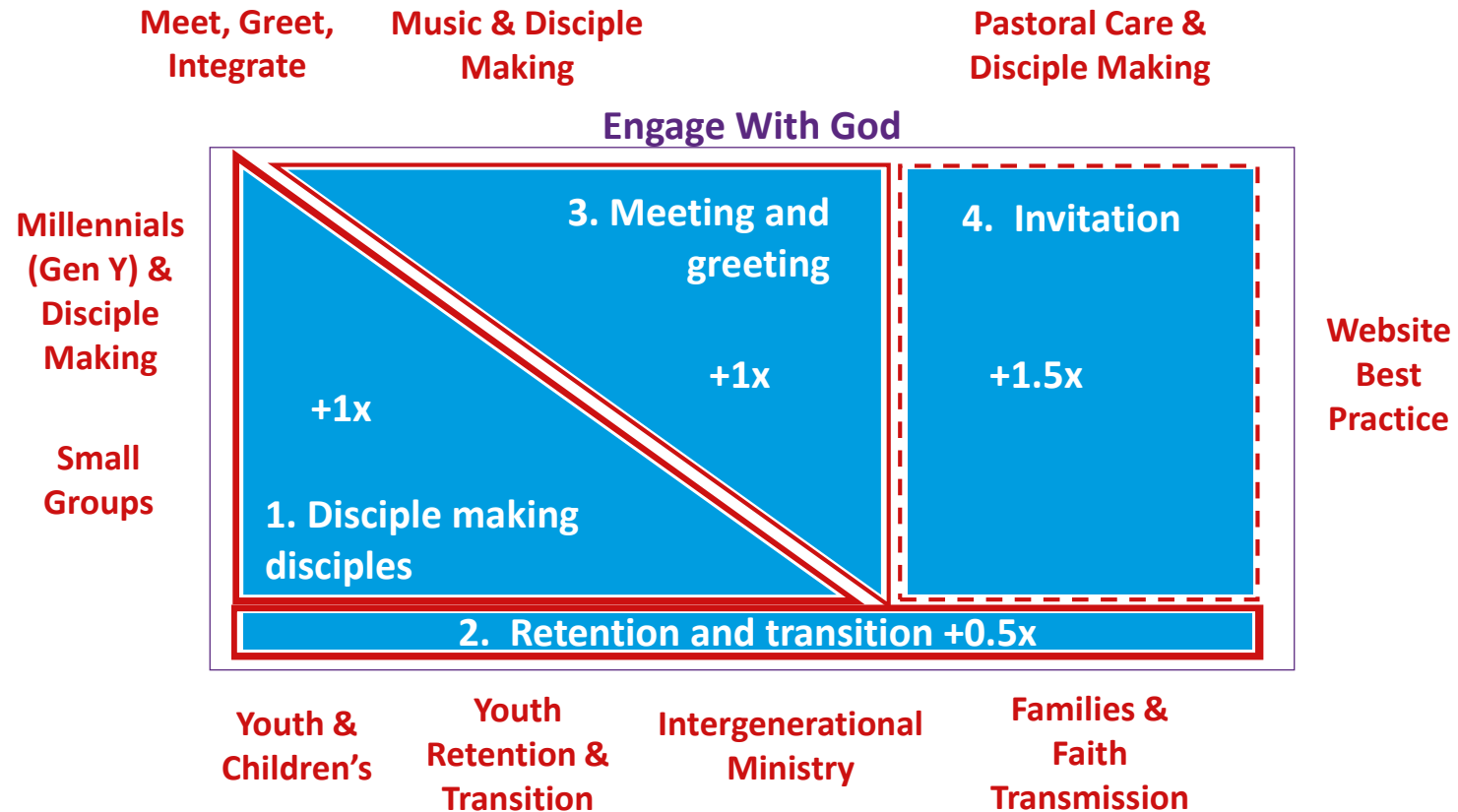
5. Confront The Data

Myths / Excuses

	Percent of Variance Explained	Personal Growth	Size Growth
Community	Local Context (Urban / Rural)	2.0%	8.0%
	Ethnicity	3.0%	1.0%
	Pop Growth	1.0%	4.0%
	Youth Mix	3.0%	3.0%
	Education	(9.0%)	(1.0%)
Leader	Age	(0.6%)	(0.8%)
	Ministry Years	(0.6%)	(1.3%)
	Congregation Years	0.1%	0.3%
Staffing	Cross Congregational	(1.4%)	(0.6%)
	High Ratio	0.0%	(0.7%)

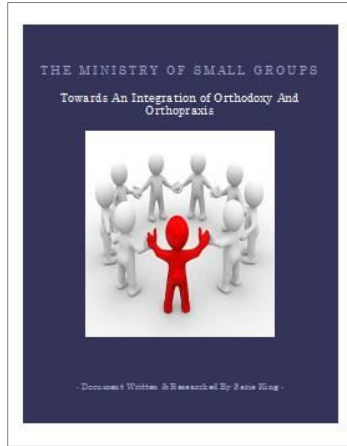
6. Understand The Task

Detailed Implementation



6. Understand The Task

Research Papers: Making disciple making disciples



- Why do small groups struggle to be effective?
- Is there best practice small groups ministry? If so, what?
- If we're not **disciple making** what are we doing?



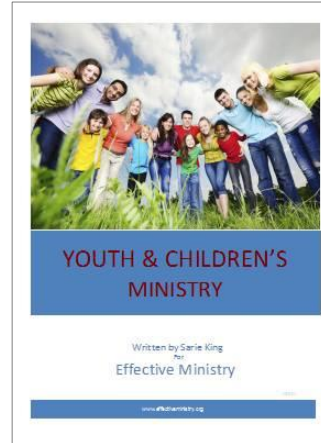
- 6 common weaknesses of most welcoming ministries
- Building a DNA of hospitality and inclusion
- Creating pathways of entry, connection and engagement
- Welcoming as a **disciple making** opportunity



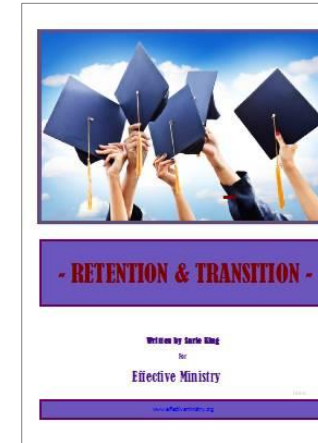
- Youth and children a critical opportunity
- Crisis point: alarming statistics on loss and disengagement
- Where now the role of parents and the church?
- Fathers a critical lever
- Growing children and youth as disciples and **disciple-makers**

6. Understand The Task

Research Papers: Making disciple making disciples



- A concerning youth & young adult retention problem
- Loss of parental engagement
- We're not transitioning well
- The erosion of intergenerational engagement
- Building better **disciple making** pathways

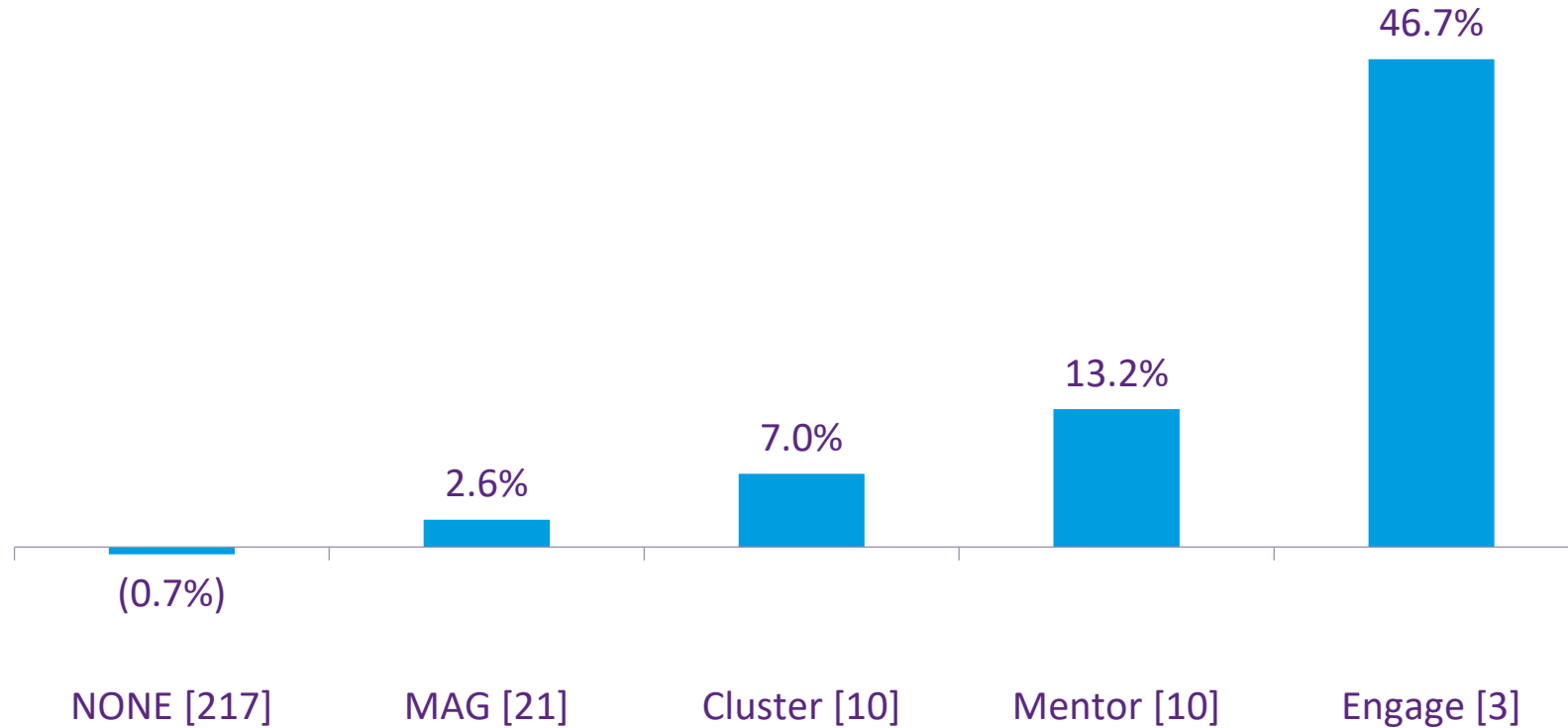


- Adults both help and hinder youth retention
- The role of parents and other adults critical to faith retention
- Silo ministry versus intergenerational engagement
- Rethinking the place of church wide services
- **Disciple making** through intergenerational ministry

6. Detail The Tasks

Field Work / CMD

Growth In Attendance

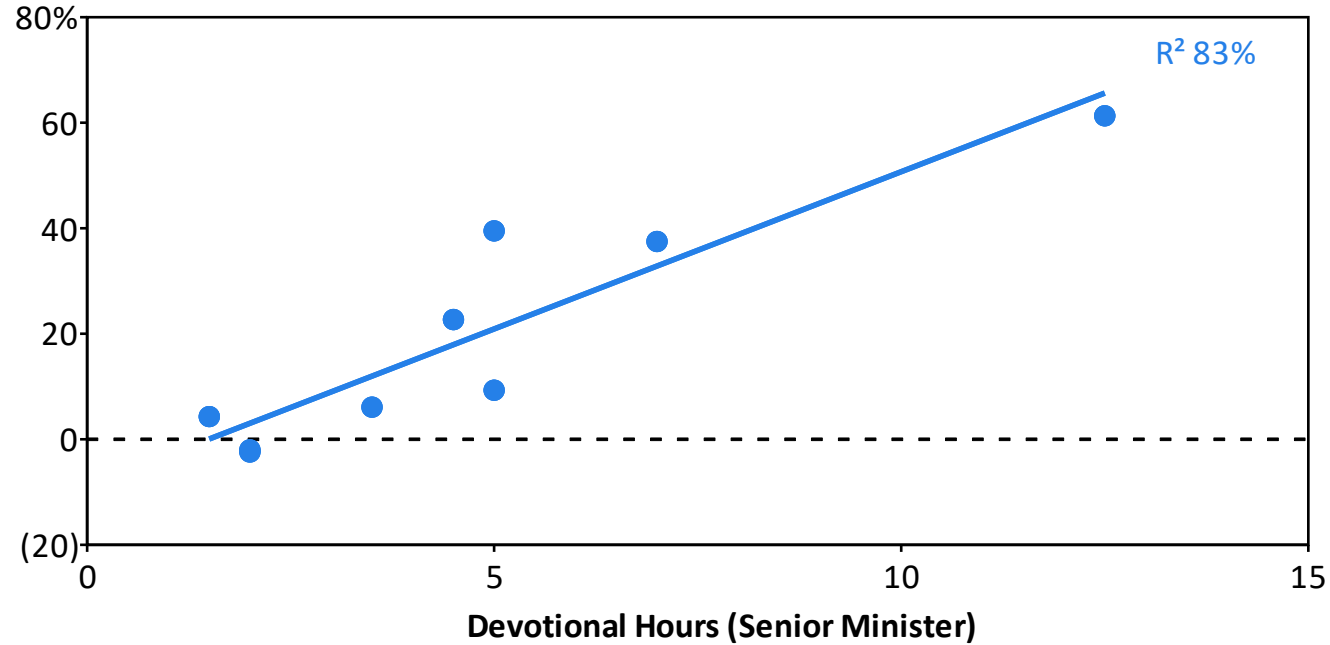


Source: Diocesan data, Median growth standardised at 4 years for comparison

Engage With God

Devotional Time

5 Year Parish Growth



*In the whole of world history there is always **one really significant hour - the present...**if you want to find eternity you must serve the present times'*
Dietrich Bonhoeffer

Source: Field Research, NCLS

Follow Up

Research

- *Sarie King*
- **EM – Effective Ministry**
- www.effectiveministry.org
- www.facebook.com/em.effectiveministry/

Upcoming Research Releases

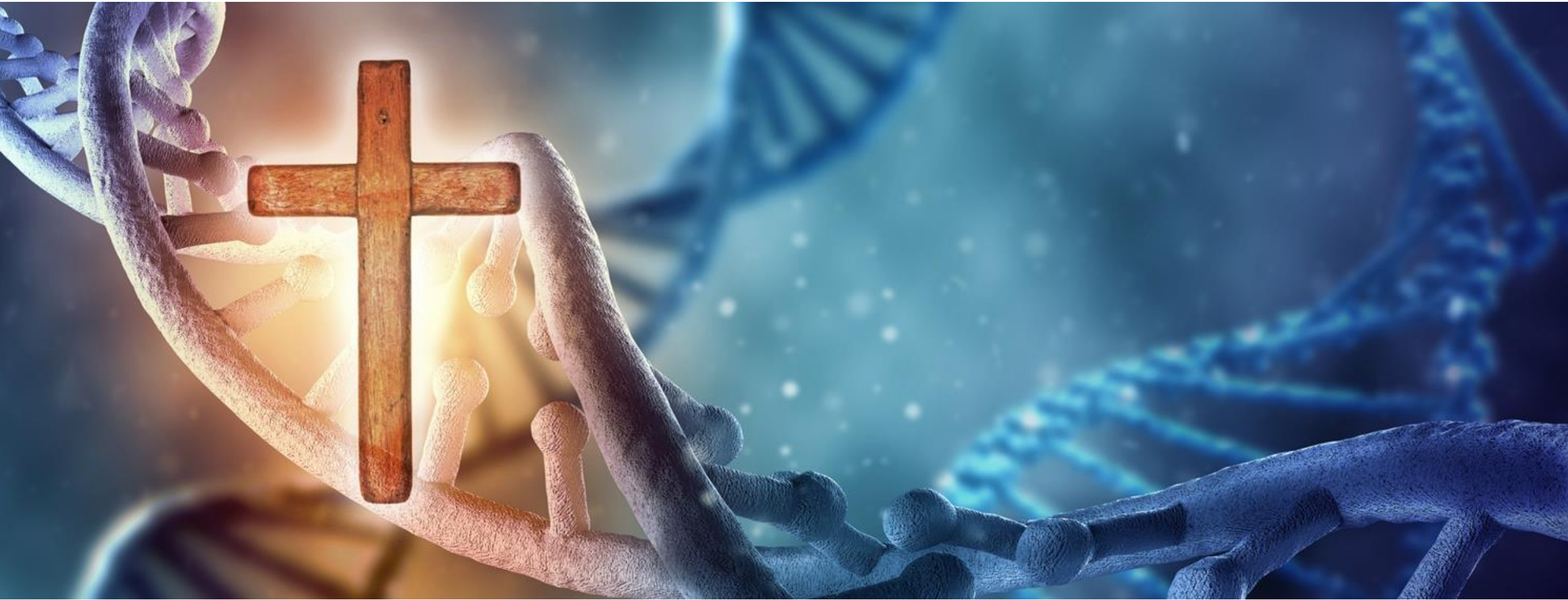
- Millennials (Gen Y) & Disciple Making
- Music & Disciple Making (EM Conference 2017)
- Christian Pastoral Care & Disciple Making
- Families & Faith Transmission
- Best Practice Church Websites & Consultation

Results

- *Peter Mayrick*
- **CMD – Centre For Ministry Development**
- www.cmd.training

Gospel DNA

Replicating Effective Ministry



EFFECTIVEMINISTRY

Thank you

Speakers

Validation of car parking

Pay at reception (level 1) before you leave for
discounted rate

Shuttle Bus – 4:15pm sharp

Feedback forms

Video:

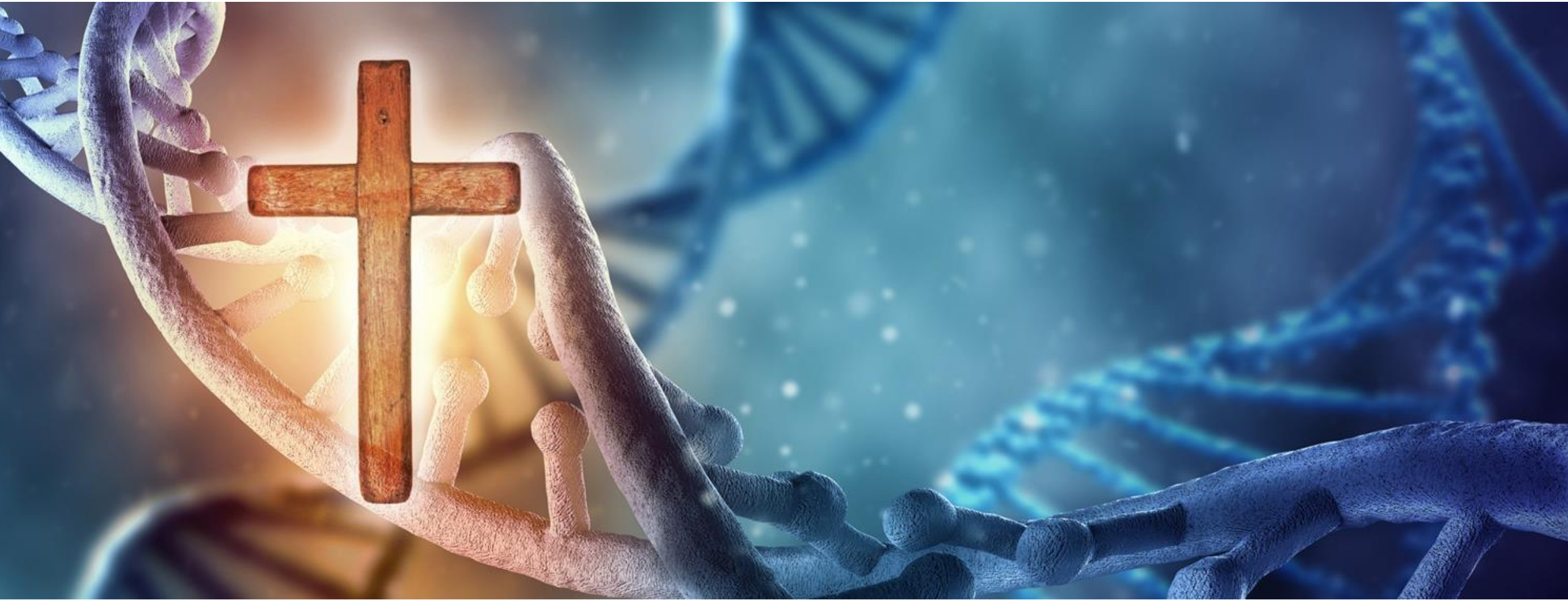
- www.cmd.training
- www.effectiveministry.org



Helene Tyas – CMD
Secretariat

Gospel DNA

Replicating Effective Ministry



EFFECTIVEMINISTRY